
Human Heart

Vision Empower

By Diya Elizabeth Dennis

Materials required

- A3 size cardboard sheet or thick chart paper (for base)
- White chart paper (for smooth surface)
- Diagram or drawing of human heart
- Red foam paper
- Sponge paper / sponge
- Tracing paper/ butter paper
- Cotton
- Cardboard pieces
- Straw
- Sequence (2 colours & 2 types-flat and raised)
- Rope (thin)
- Poster/watercolour
- Scissors
- Fevicol/ super glue

Steps involved:

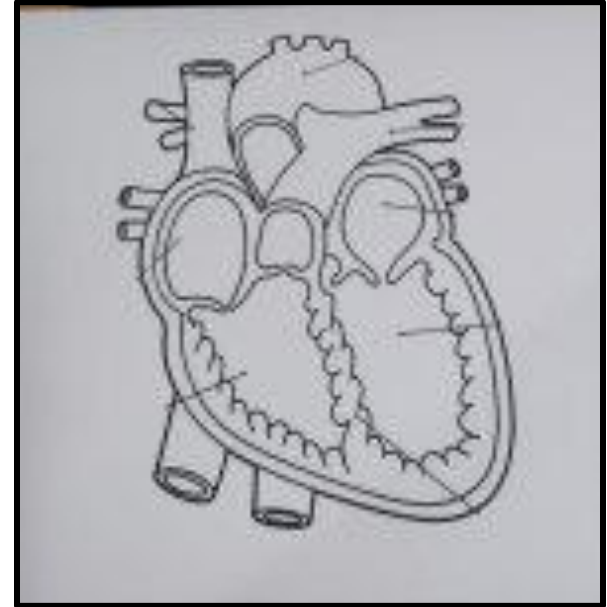
Step 1. Take a cardboard sheet/
hard chart paper of size A3
(29.7x42cm).



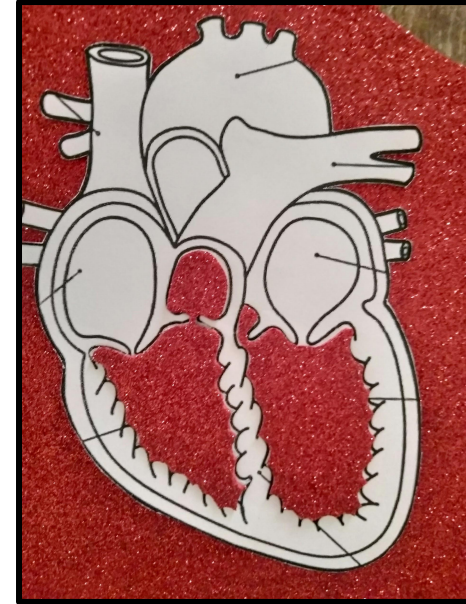
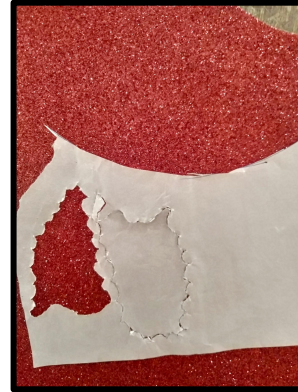
Step 2. Take a white chart paper of A3 size and paste it on the cardboard sheet.



Step 3: Print the diagram / draw the outline of heart. Cut along the outline and paste it on the chart paper upon the cardboard.



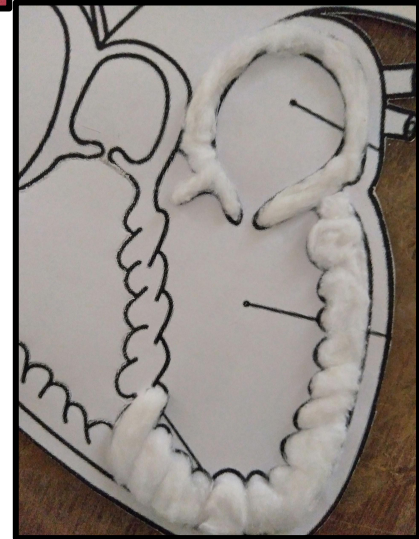
Step 4: Take the foam sheet and using a tracing paper, draw the outline of the two ventricles on them. Cut out the two ventricles and paste it on the diagram.



Step 5: Take a small piece of cardboard sheet and using a tracing paper, draw the outline of the two atrium on them. Cut out the two atrium and paste it on the diagram.



Step 6: Take a bunch of cotton and cut small pieces of it. Create a small curve on one end and paste the pieces in between the outer border and inner parts to depict interventricular septum.



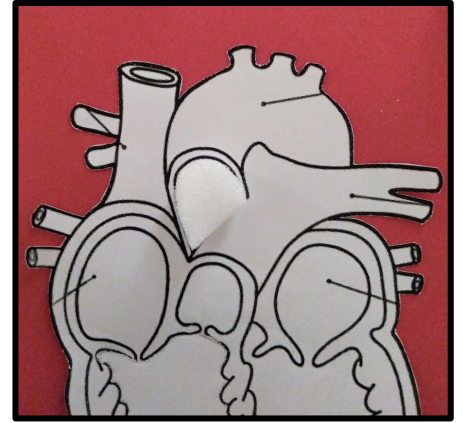
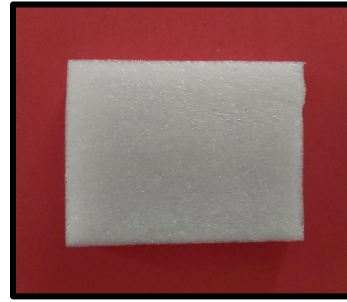
Step 7: Take a thin rope and cut out a long piece of it as per measurement to depict the outer border of the organ. Paste it using super glue for better adhesion.

(Note: Burn the ends of the rope so that the ends do not split open later)



Step 8: Take a piece of sponge and using a tracing paper, draw the outline of the aorta. Cut out the piece and paste it on the diagram. You may paint it red for better appearance.

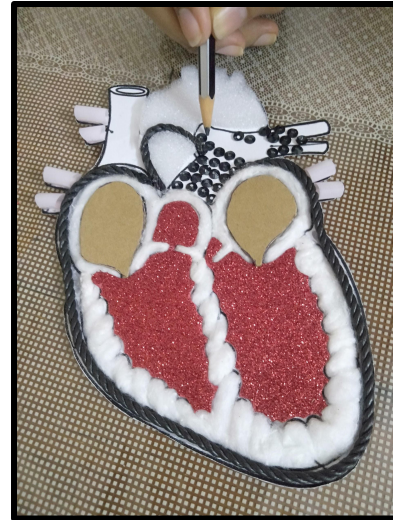
(Note: Since there is a vein passing above aorta in this picture, the part is pasted as two separate pieces for better understanding.)



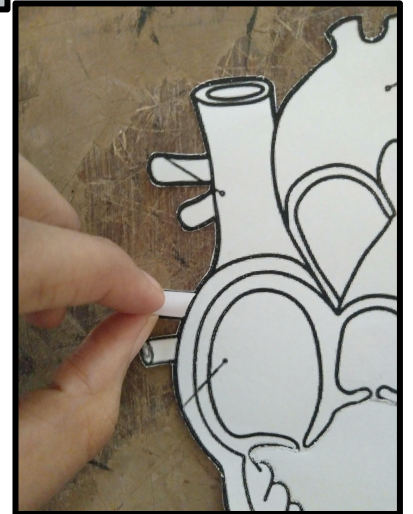
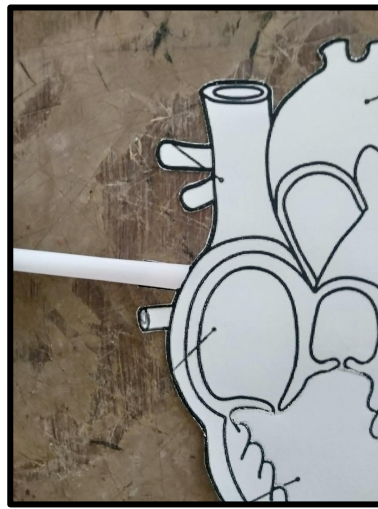
Step 9: Take a piece of sponge and using a tracing paper, draw the outline of the superior vena cava on it. Cut out the piece and paste it on the diagram. Paste sequences (flat type) on the sponge without leaving any space in between.



Step 10: Take the other type of sequence (preferably raised) and paste them on the part depicting pulmonary artery. Paste them very closely without leaving any space in between.



Step 11: Take a straw and cut 6 small bits as shown in the picture to depict veins. Paste them using super glue for better adhesion.



Label the parts.
The Tactile diagram of Human Heart is ready!!

