

Digestive System of Ruminant

Vision Empower

—

Diya Elizabeth Dennis

Materials Required

- A3 size cardboard sheet or thick chart paper (for base)
- White chart paper (for smooth surface)
- Green foam paper
- Sponge paper / sponge
- Cardboard sheet
- Cotton
- Rubberband
- Twine
- Sponge net (netted fruit cover)
- Synthetic net
- Blue synthetic cloth
- Artificial / dry leaves
- Black Sketch
- Scissors
- Fevicol/ glue

Steps involved:

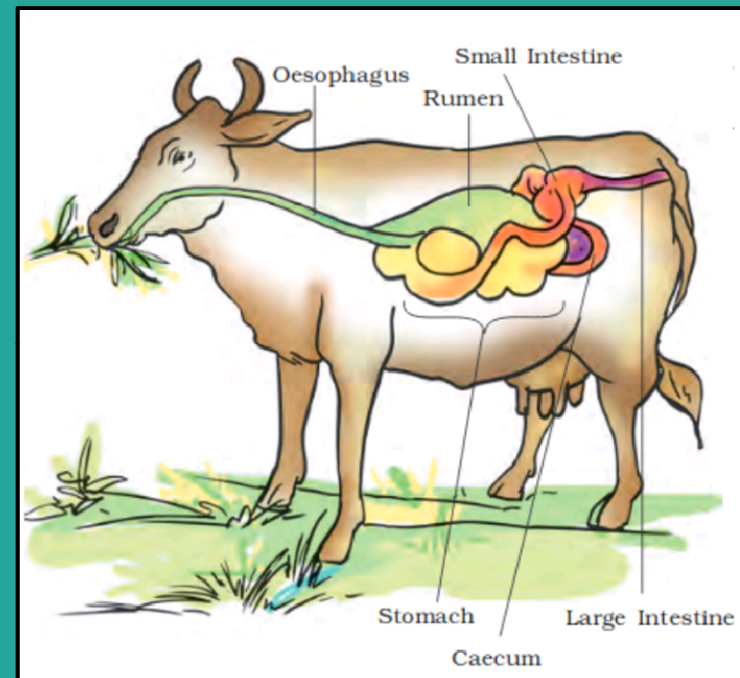
Step 1. Take a cardboard sheet/
hard chart paper of
size A3 (29.7x42cm).



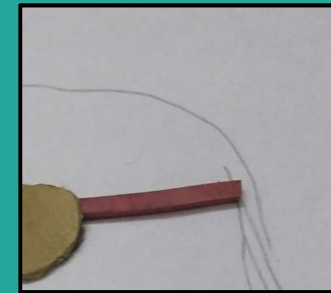
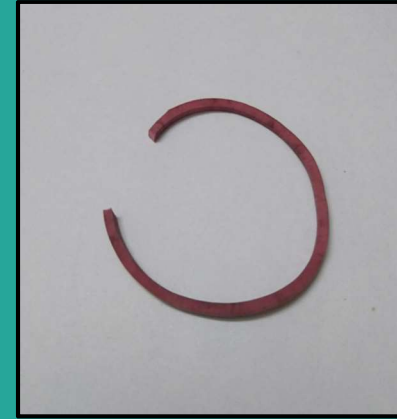
Step 2. Take a white chart paper of A3 size and paste it on the cardboard sheet.



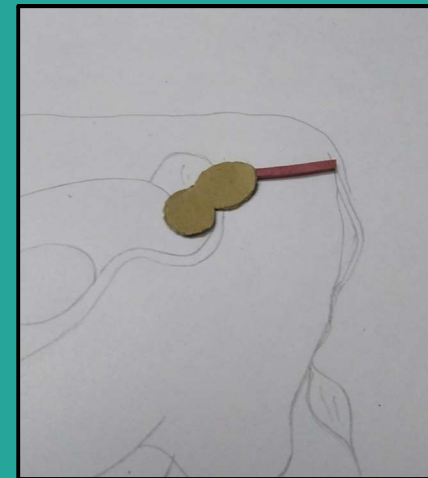
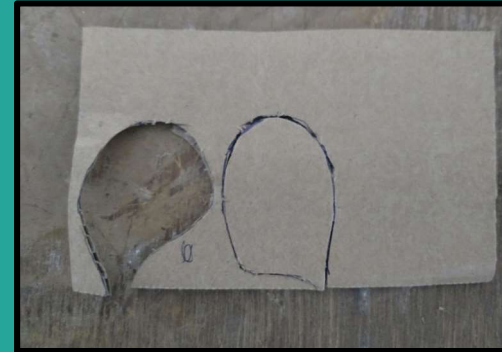
Step 3. Draw/ paste the outline of a ruminant animal with the digestive system as shown in the figure here.



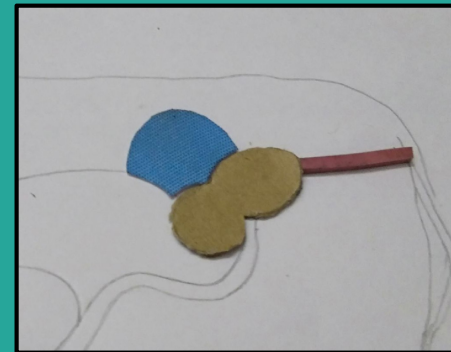
Step 4. Take a rubber band and make a cut to get a long string. Paste it at the end of the digestive system to depict the large intestine.



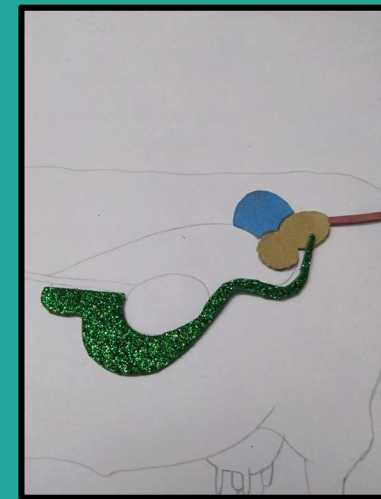
Step 5. Take the cardboard sheet and draw the outline of small intestine. Cut out the piece and paste it on the figure drawn corresponding to the organ.



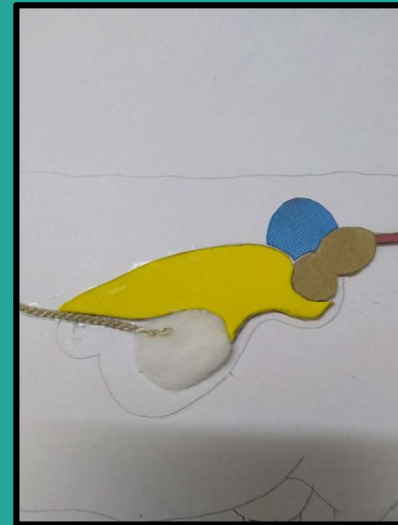
Step 6: Take the blue synthetic cloth and cut out a piece in the shape of the organ as shown in the figure.



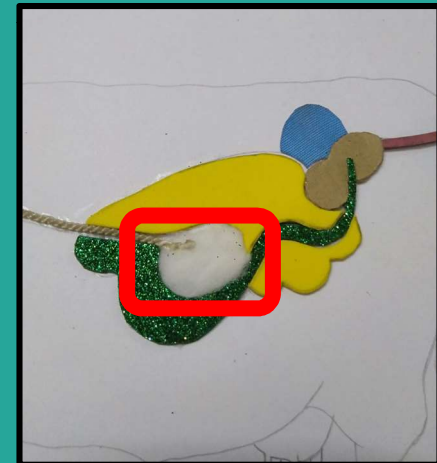
Step 7: Take the green foam sheet and cut out a piece in the shape of the organ as shown in the figure. Paste the piece after completing the inner organs.



Step 8: Take the yellow sponge sheet and cut out a piece in the shape of the rumen as shown in the figure. Paste it.



Step 9: Take a bunch of cotton and cut out a small piece of it in the shape of an oval. Paste it below the yellow sponge sheet.



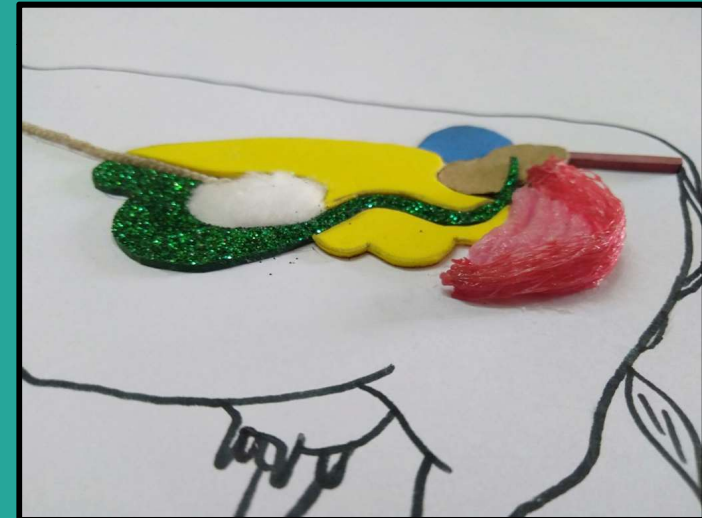
Step 10. Take a white twine and pate it along the line depicting oesophagus.



Step 11. Take a sponge net or netted fruit cover and cut out a piece in the shape of the organ as shown in the picture. Then paste it firmly.



Step 12. Take a synthetic net and roll it into a small strip as shown in the picture. Stick it outer to the sponge net pasted before.



Step 13. Take a very small branch of artificial or dry leaves and paste it near to the mouth of the ruminant.



Label the parts.
The Tactile diagram of Digestive System of Ruminant is ready!!

