



FERTILIZATION IN PLANTS

VISION EMPOWER

BY KRISHNENDU E

MATERIALS REQUIRED

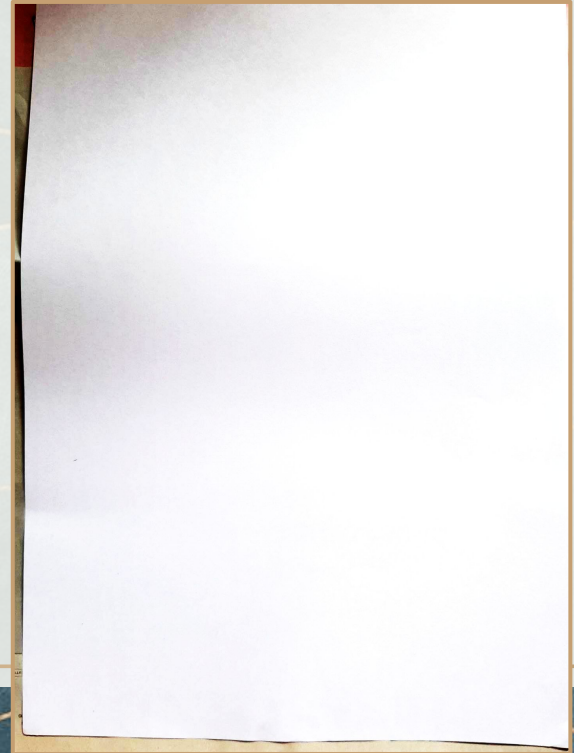
- A3 Sheet
- Chart Paper/
Cardboard
- Foam paper
- Glitter Chart Paper
- Twine Threads
- Cotton
- Beads
- Glue to stick (Fevicol)
- Scissors



STEPS INVOLVED

Step 1

Take an A3 sheet and paste it on a chart paper or cardboard piece to provide a strong base.



Step 2

On a foam paper, outline the shape of a Pistil (roughly the shape of a flower vase) and cut it out. The cutout should be fairly large to fill almost three-fourths of the A3 sheet.



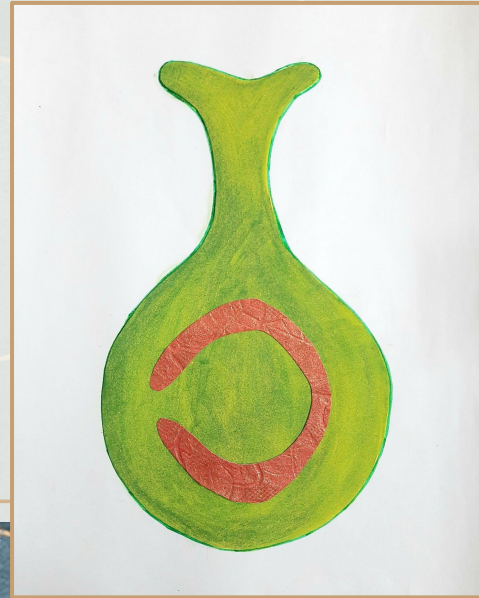


Step 3

Paste the cutout at the centre of the A3 sheet. Paint it green (or any other distinguishable colour of your choice) using water colour and leave it to dry.

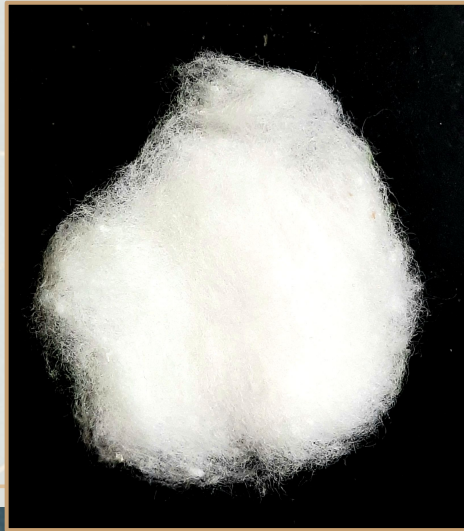
Step 4

Cut out a closed C-shape from the glitter chart paper and paste it on the pistil as shown. This depicts the Ovary lining.



Step 5

Cut out an egg-shaped piece from the cotton and stick it at the centre of the ovary lining. This depicts the Ovary.



Step 6

Paste some beads on the cotton to depict the eggs.



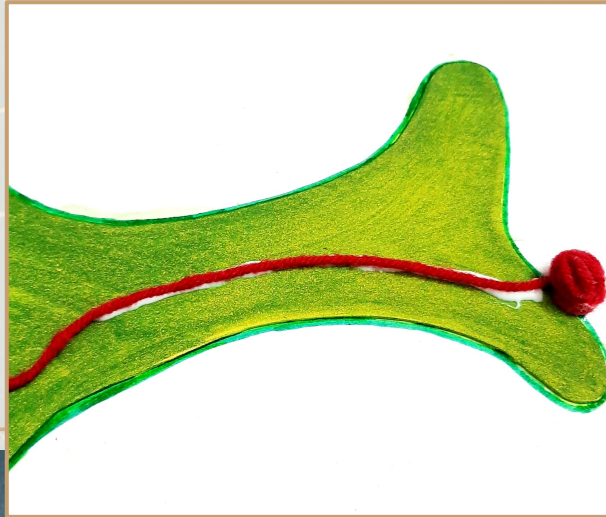
Step 7

Take a twine thread and roll it into a small ball to depict the pollen. Paste it at the top (on the stigma).



Step 8

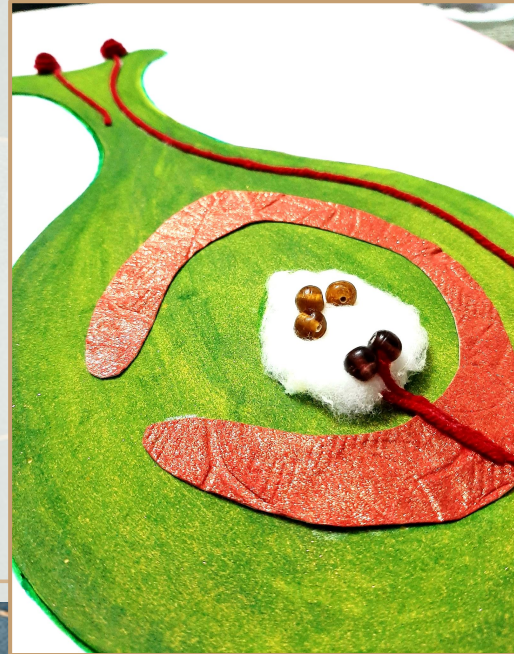
Use the same twine thread to connect the pollen to one of the eggs in the ovary (like a tail). Paste it firmly with fevicol along the style and through the ovary.



Step 9

Again roll a similar thread ball to depict another pollen. Paste that too on the stigma. Give a shorter tail to this one, to show the process of the growth of the pollen.

... And with that, the tactile diagram of Fertilization in Plants is ready!



“

THANK YOU