



# Pitcher Plant

VISION EMPOWER

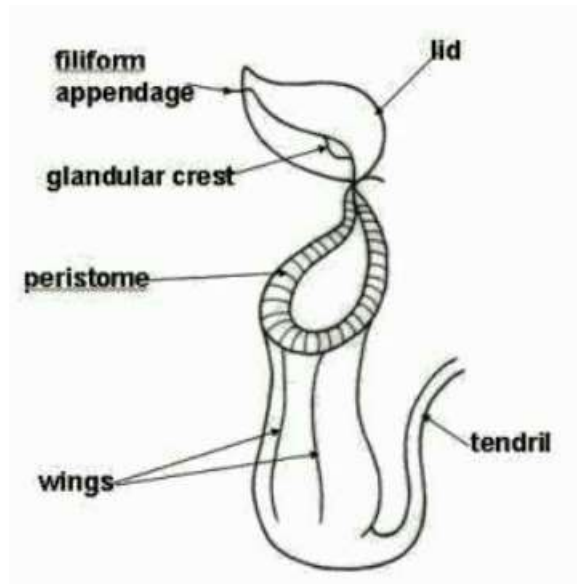
By :  
Caren Elza Mathew

# Materials required:

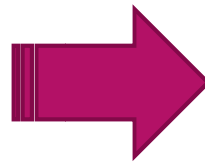
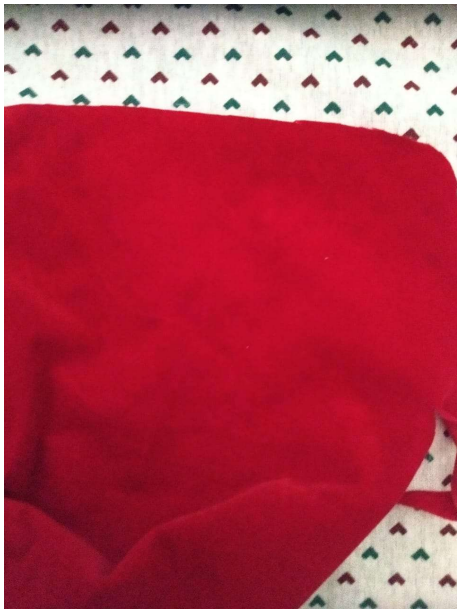
- A3 card sheet
- Sand paper
- Plastic rope
- Velvet cloth
- Foam paper
- Aluminium foil
- Glue

# Steps involved:

- ▶ Step 1: Take an A3 size card sheet and make a rough drawing of the pitcher plant.



- ▶ Step 2: Make a cut out from the velvet cloth in the shape of the opening of pitcher plant and paste it on the card sheet.



- ▶ Step 3: Take a piece of plastic rope, make it into the shape of peristome and attach to the card sheet.
- ▶ Step 4: Make a cut out form the sand paper sheet in the shape of the body of pitcher plant. Paste it to the base card sheet.



- ▶ Step 5: Make a small ball by crumpling a piece of aluminium foil to make the glandular cecum. Keep it aside.
- ▶ Step 6: Make a cut out from the foam sheet in the shape of the lid and attach it to the card sheet. Paste the aluminium foil ball at the appropriate position on the card sheet.





Tactile diagram  
of pitcher plant is  
ready.

Thank you!