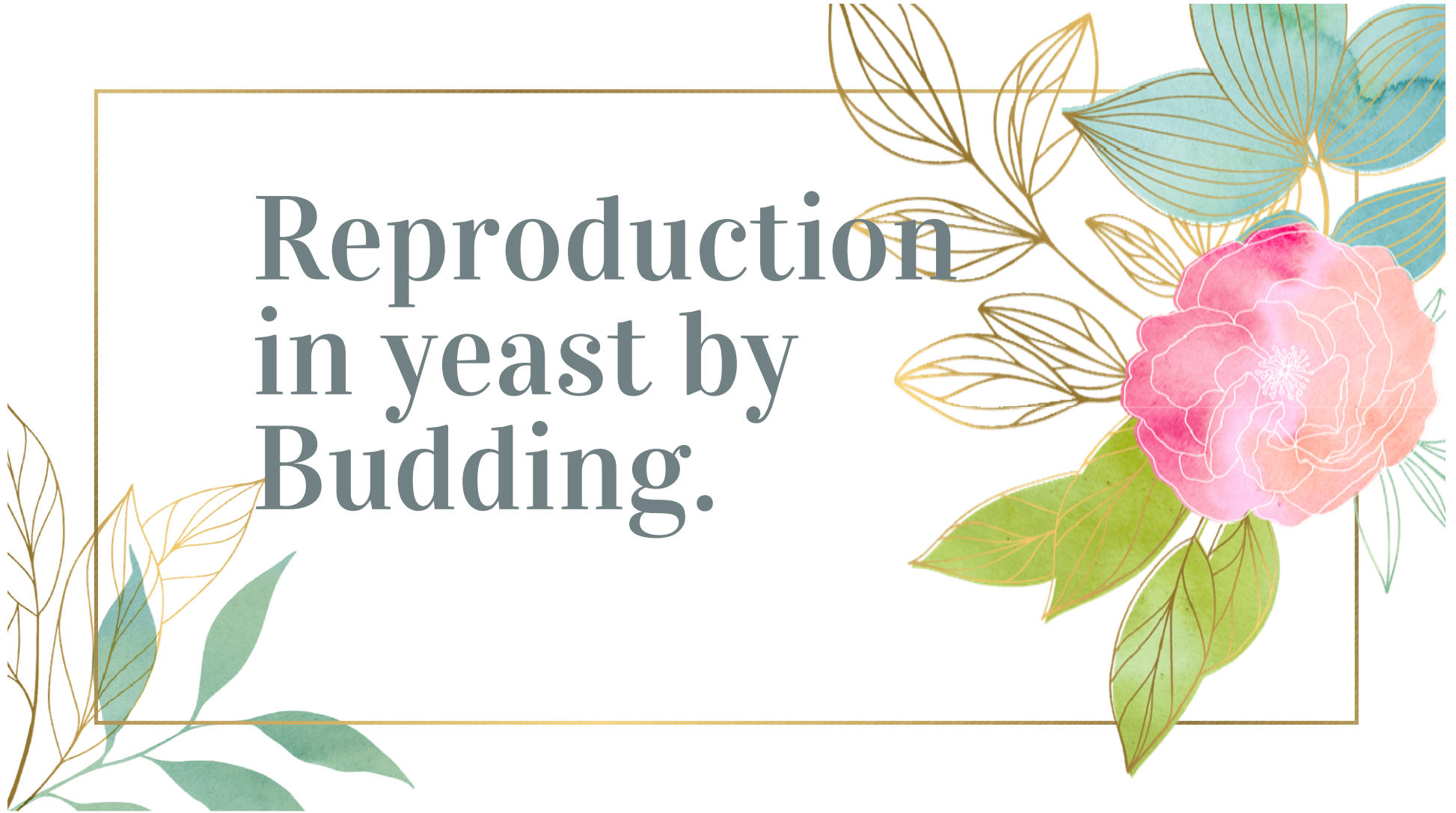
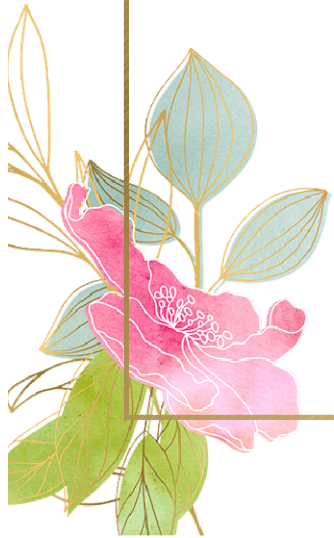


Reproduction
in yeast by
Budding.



Materials Required

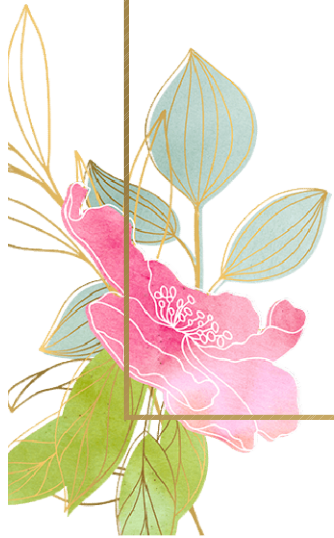
- Chart Paper
- Cardboard
- Glue
- Foam Paper
- Velvet Sheet Paper.



Instructions

Base

- ▷ The first step is to create a base.
- ▷ The diagram is created on A3. In order for better ease, here a chart paper is cut out in A3 size (29.7 x 42 cm)
- ▷ This chart can then be stuck onto a hard cardboard which would give better stability.



First stage of yeast ($\frac{1}{4}$)

- ▷ The next step the first yeast formation.
- ▷ This is made firstly out of yellow foam paper.
- ▷ To start off, a basic figure was drawn on a plain sheet of paper.
- ▷ It is then stuck on on the smooth side of the foam paper.
- ▷ This is then cut out. This is then stuck onto the base .





- ▶ The next is to create the centre part of the cell which will later develop into the new bud.
- ▶ This is made out of orange velvet paper. On a paper a rough ovale diagram is drawn.
- ▶ This is then stuck on to the smooth side of the velvet sheet and is later cut out and stuck on to the foam yeast.



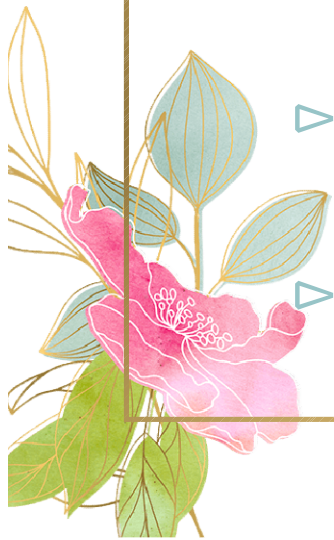
Developing Bud (2/4)

- ▷ The yeast base is made out of yellow coloured foam paper.
- ▷ A basic figure was drawn on a plain sheet of paper.
- ▷ It is then stuck on on the smooth side of the foam paper.
- ▷ This is then cut out. This is then stuck onto the base .







- ▷ The next is to create the centre part of the cell which will later develop into the new bud.
- ▷ This is made out of orange velvet paper. For a more accurate representation a print out is used.
- ▷ The print out is cut and stuck on the smooth side of the velvet sheet
- ▷ Then this piece is cut out and stuck to the yeast base.



New Bud ($\frac{3}{4}$)

- ▶ The yeast base is made out of yellow coloured foam paper.
- ▶ A print out is used which is then stuck on on the smooth side of the foam paper.
- ▶ This is then cut out. This is then stuck onto the chart paper base .



- 
- 
- ▷ The next part is to create the developing bud and the new bud.
 - ▷ This is done with orange velvet paper. For a more accurate representation a print out is used.
 - ▷ The two bud print outs are then cut and stuck on the smooth side of the velvet sheet
 - ▷ Then these pieces are cut out and stuck to the yeast base.

Chain of buds (4/4)

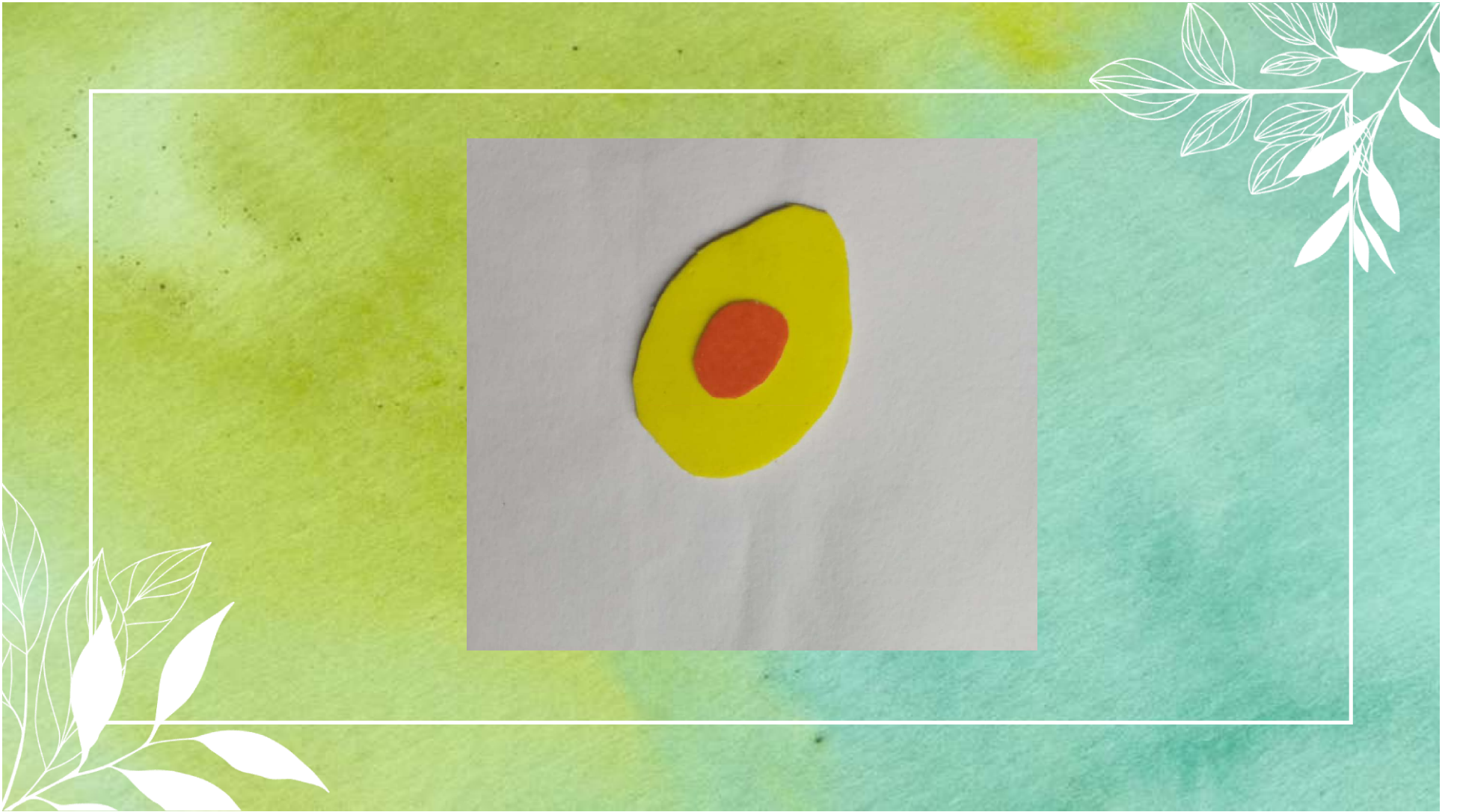
- ▶ The yeast base is made out of yellow coloured foam paper.
- ▶ For this we require 4 yeast bases which are gradually reducing in size.
- ▶ A print out is used which is then stuck on on the smooth side of the foam paper.
- ▶ These pieces are then cut out, arranged and stuck onto the chart paper base .

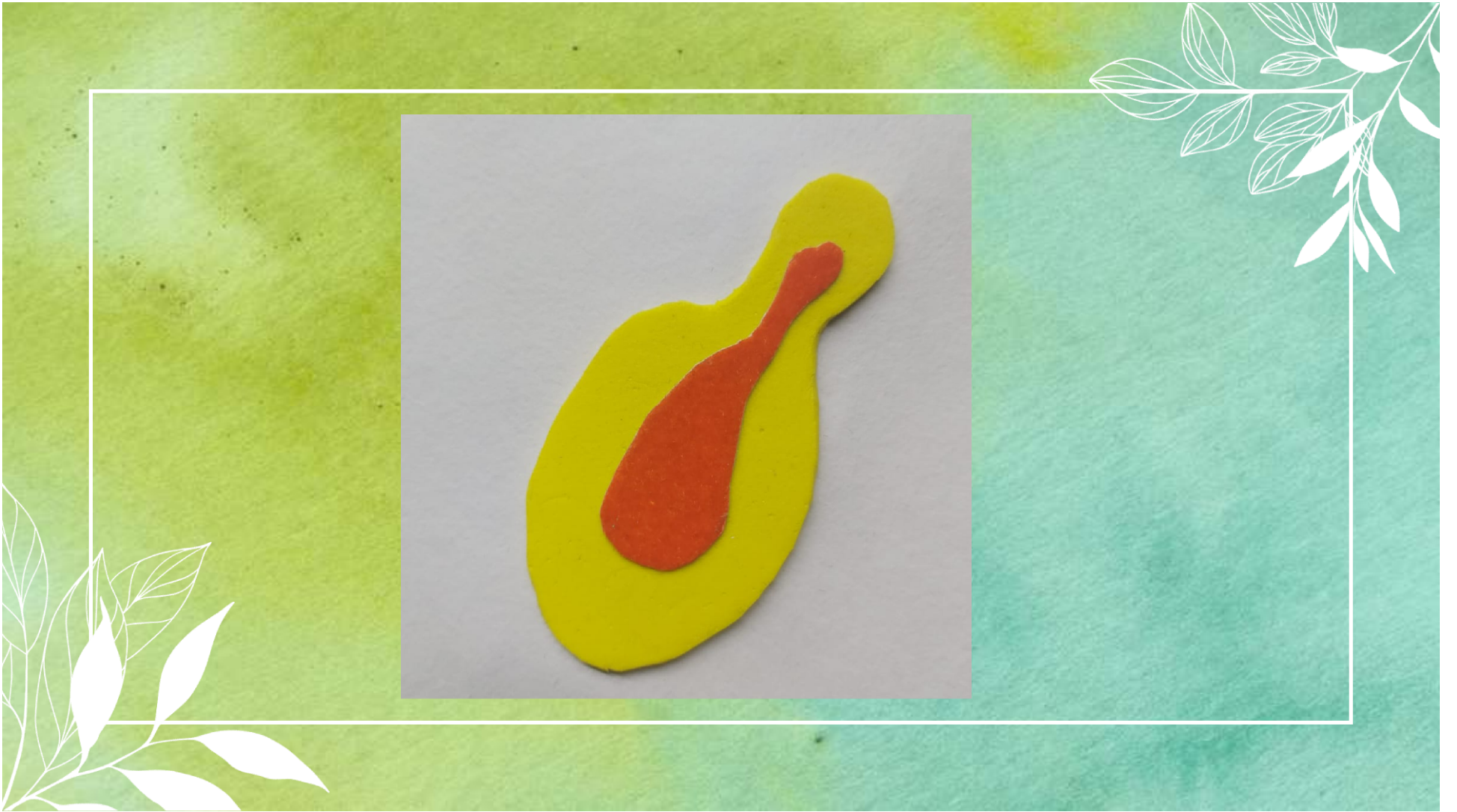


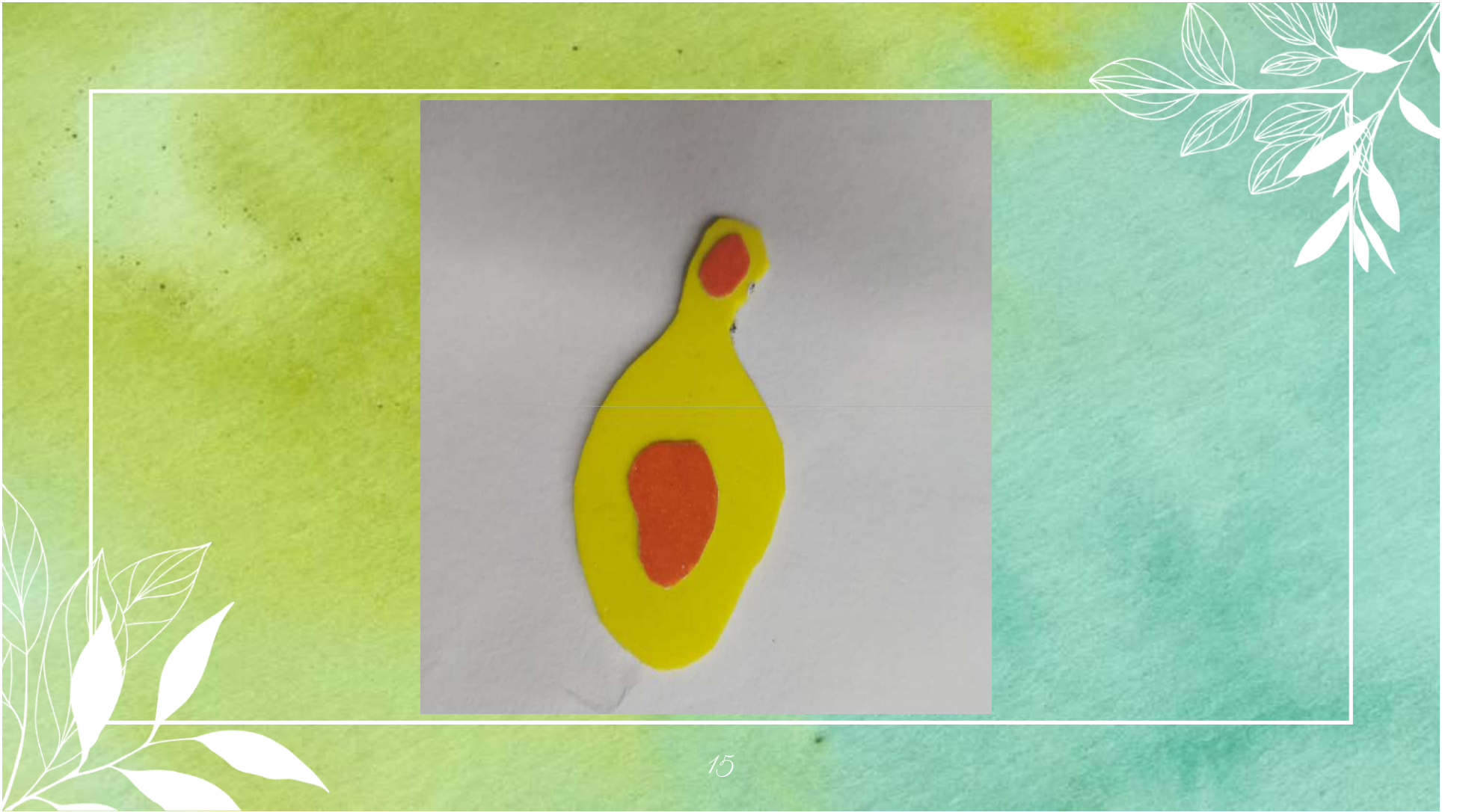


- ▶ Similar to the yeast in the chain bud, 4 bud transformational parts are required.
- ▶ This is done with orange velvet paper. For a more accurate representation a print out is used as reference.
- ▶ The four bud print outs are then cut and stuck on the smooth side of the velvet sheet
- ▶ Then these pieces are cut out, arranged and stuck to the yeast base.













“

Thank You!

”

